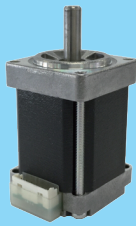


KV28

1.8°/step

□28mm



Applications

FA, Medical Devices
Security equipment

SINGLE SHAFT

MODEL
KV2832-N2U901
KV2841-N2U901
KV2851-N2U901

OPTION

KV28LUS300

FEATURES

- Space saving

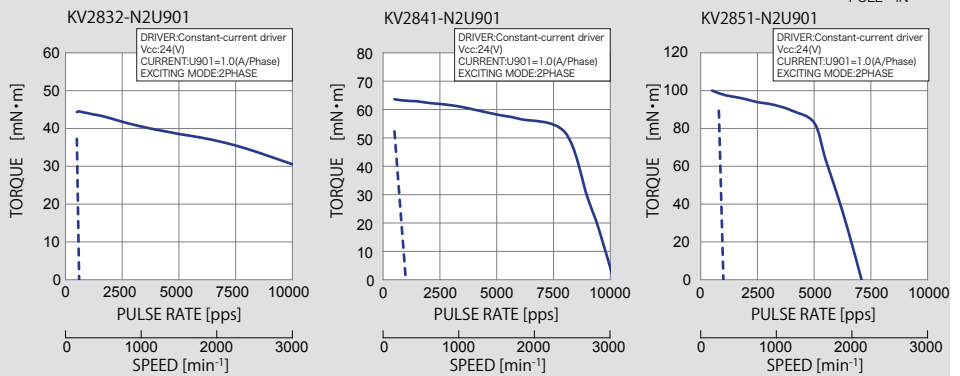
SPECIFICATIONS

STEP ANGLE ° /step	VOLTAGE V	CURRENT A/PHASE	WINDING RESISTANCE Ω/PHASE	INDUCTANCE mH/PHASE	HOLDING TORQUE mN·m	ROTOR INERTIA g·cm ²	MODEL
1.8	3.00	1.0	3.0	1.0	65	9.2	KV2832-N2U901
1.8	3.60	1.0	3.8	1.2	85	15	KV2841-N2U901
1.8	3.80	1.0	4.3	1.7	120	22	KV2851-N2U901

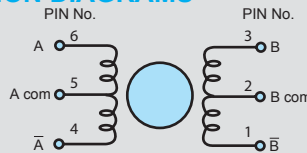
GENERAL SPECIFICATIONS

INSULATION RESISTANCE	500V DC 100MΩ min. (at normal temp.& humidity,between lead and case)
DIELECTRIC STRENGTH	500V AC 50Hz 1min. (at normal temp.& humidity,between lead and case)
AMBIENT TEMP. AND HUMIDITY	-10°C~+50°C, 5%~95%RH (noncondensing)
STORAGE TEMP. AND HUMIDITY	-20°C~+70°C, 5%~95%RH (noncondensing)
TEMPERATURE RISE	80K max (By resistance method)
POSITION ACCURACY	±10%

SPEED-TORQUE CHARACTERISTICS



CONNECTION DIAGRAMS

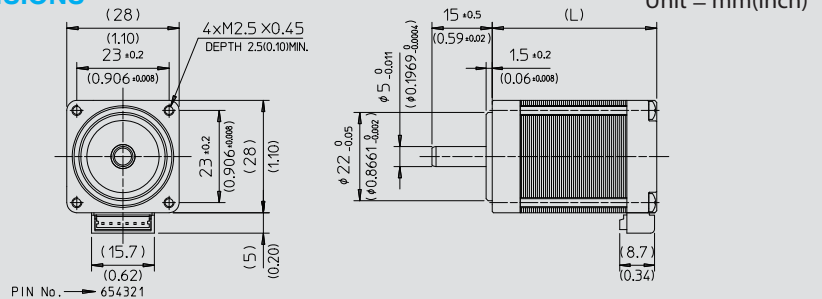


51065-0600(PIN NO.)	6	5	4	3	2	1
PHASE	A	A com	\bar{A}	B	B com	\bar{B}
COLOR OF LEAD	BLACK	RED	BROWN	YELLOW	BLUE	ORANGE

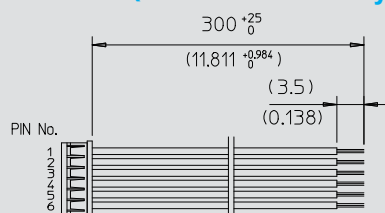
CW viewed from rotor shaft when using the following sequence diagram.
EXCITATION SEQUENCE

PHASE	1	2	3	4
A	-			-
B	-	-		
\bar{A}		-	-	
\bar{B}			-	-
A com	+	+	+	+
B com	+	+	+	+

DIMENSIONS



OPTION (Leadwire Assembly)



The KV28 motor is supplied without a leadwire assembly. This must be ordered as a separate part.

MODEL	L mm (inch)	mass g
KV2832-N2U901	32(1.26)	110
KV2841-N2U901	41(1.61)	140
KV2851-N2U901	51(2.01)	190

CONNECTOR SPECIFICATIONS

Maker	MOLEX
Applicable Housing	51065-0600
Applicable Terminal	50372-8000
Lead Wire	UL3266 AWG26