

DMN29 Series



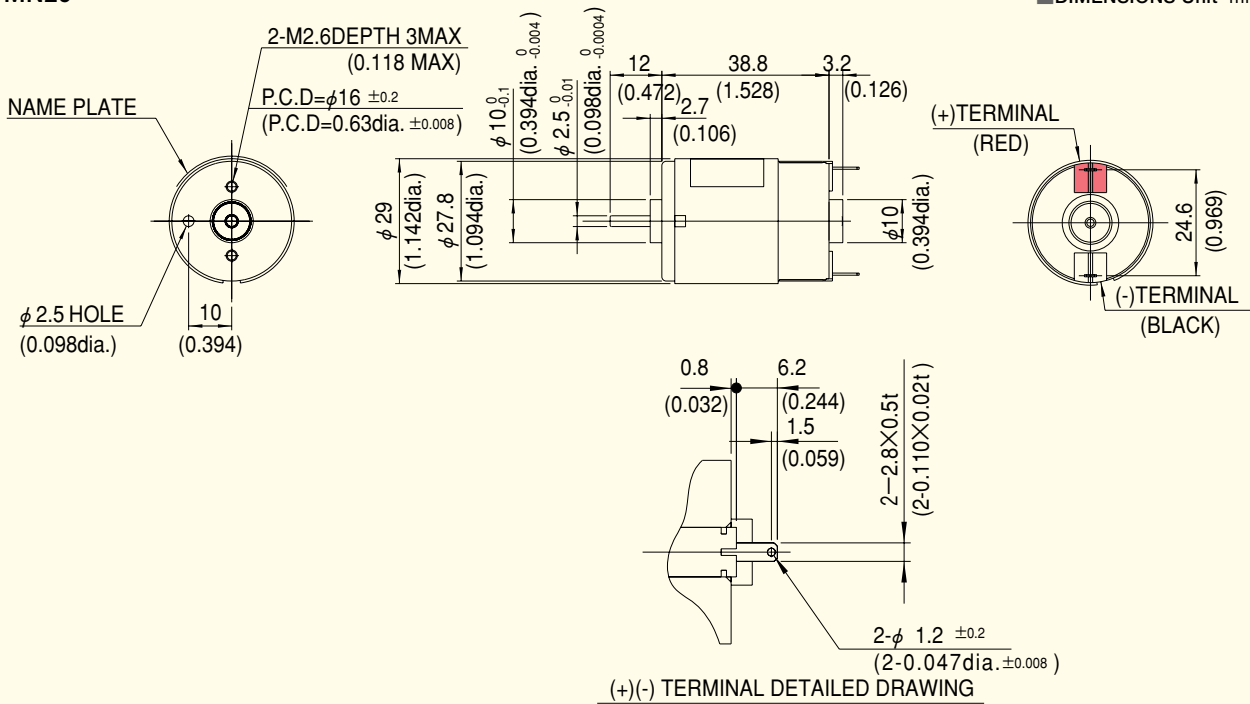
Specification

| TYPE | RATED | | | | | | NO LOAD | | STALL | | WEIGHT | |
|---------|---------|---------|--------|-------|---------|-------|---------|-------|--------|-------|--------|------|
| | OUT PUT | VOLTAGE | TORQUE | | CURRENT | SPEED | CURRENT | SPEED | TORQUE | | | |
| | W | V | mN·m | oz·in | A | r/min | A | r/min | mN·m | oz·in | g | lb |
| DMN29BA | 3.0 | 12 | 7.8 | 1.11 | 0.42 | 3700 | 0.07 | 5000 | 30 | 4.17 | 90 | 0.20 |
| DMN29BB | 3.0 | 24 | 7.8 | 1.11 | 0.21 | 3700 | 0.05 | 5000 | 30 | 4.17 | 90 | 0.20 |

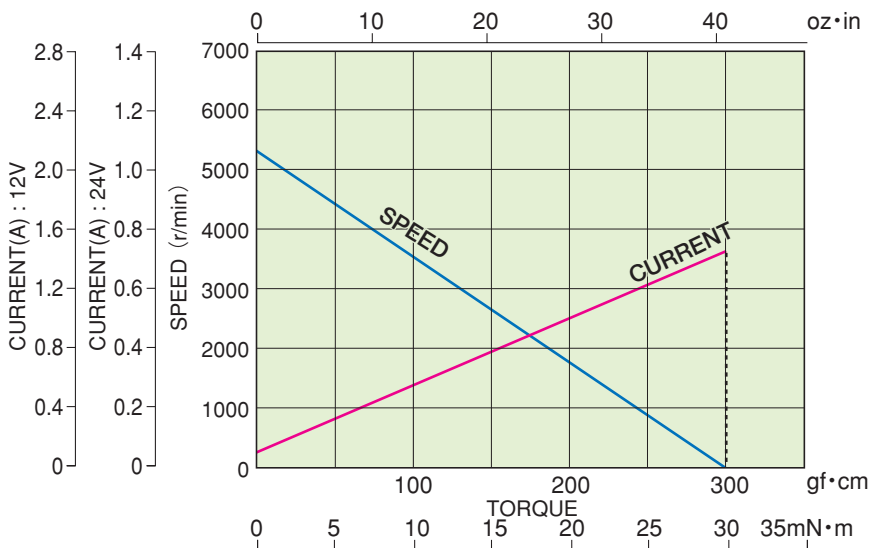
Outline

DMN29

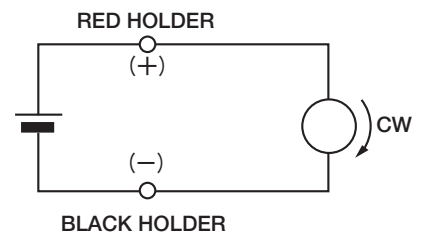
■ DIMENSIONS Unit mm(inch)



CURRENT, SPEED-TORQUE CURVE



CONNECTION



36G

Intermittent Operation

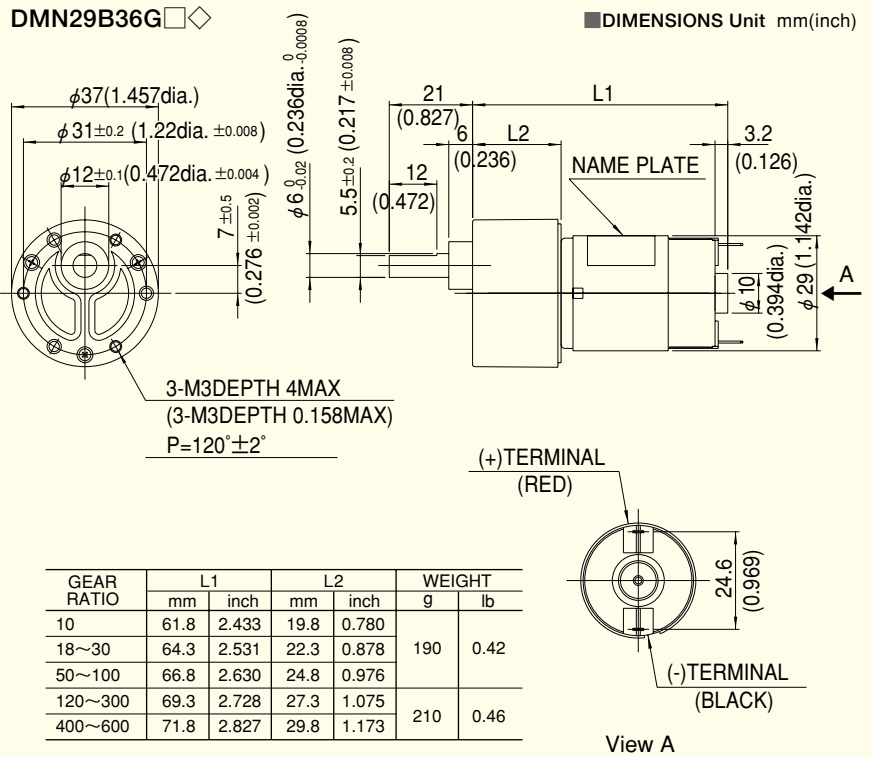


Specification

| GEAR RATIO | DMN29B36G□◇ | | |
|------------|--------------|-------|-------|
| | RATED TORQUE | | SPEED |
| | N·m | oz·in | r/min |
| 10 | 0.064 | 9.04 | 370 |
| 18 | 0.098 | 13.9 | 206 |
| 20 | 0.11 | 15.3 | 185 |
| 30 | 0.17 | 23.6 | 123 |
| 50 | 0.25 | 36.2 | 74.0 |
| 60 | 0.30 | 43.1 | 61.7 |
| 75 | 0.38 | 54.3 | 49.3 |
| 100 | 0.39 | 55.6 | 40.1 |
| 120 | 0.39 | 55.6 | 34.0 |
| 150 | 0.39 | 55.6 | 28.4 |
| 180 | 0.39 | 55.6 | 24.4 |
| 200 | 0.39 | 55.6 | 22.2 |
| 250 | 0.39 | 55.6 | 18.2 |
| 300 | 0.39 | 55.6 | 15.4 |
| 400 | 0.39 | 55.6 | 11.7 |
| 500 | 0.39 | 55.6 | 9.5 |
| 600 | 0.39 | 55.6 | 8.0 |

- ※ Enter the required reduction ratio in the □.
- ※ Rotation of gearbox shaft is in reverse of rotation of motor.
- ※ Enter the required voltage A or B in the ◇.

Outline



43G

Intermittent Operation



Specification

| GEAR RATIO | DMN29B43G□◇ | | |
|------------|--------------|-------|-------|
| | RATED TORQUE | | SPEED |
| | N·m | oz·in | r/min |
| 10 | 0.064 | 9.04 | 370 |
| 18 | 0.098 | 13.9 | 206 |
| 20 | 0.11 | 15.3 | 185 |
| 30 | 0.17 | 23.6 | 123 |
| 50 | 0.25 | 36.2 | 74.0 |
| 60 | 0.30 | 43.1 | 61.7 |
| 75 | 0.38 | 54.3 | 49.3 |
| 100 | 0.39 | 55.6 | 40.1 |
| 120 | 0.39 | 55.6 | 34.0 |
| 150 | 0.39 | 55.6 | 28.4 |
| 180 | 0.39 | 55.6 | 24.4 |
| 200 | 0.39 | 55.6 | 22.2 |
| 250 | 0.39 | 55.6 | 18.2 |
| 300 | 0.39 | 55.6 | 15.4 |
| 400 | 0.39 | 55.6 | 11.7 |
| 500 | 0.39 | 55.6 | 9.5 |
| 600 | 0.39 | 55.6 | 8.0 |

- ※ Enter the required reduction ratio in the □.
- ※ Rotation of gearbox shaft is in reverse of rotation of motor.
- ※ Enter the required voltage A or B in the ◇.

Outline

